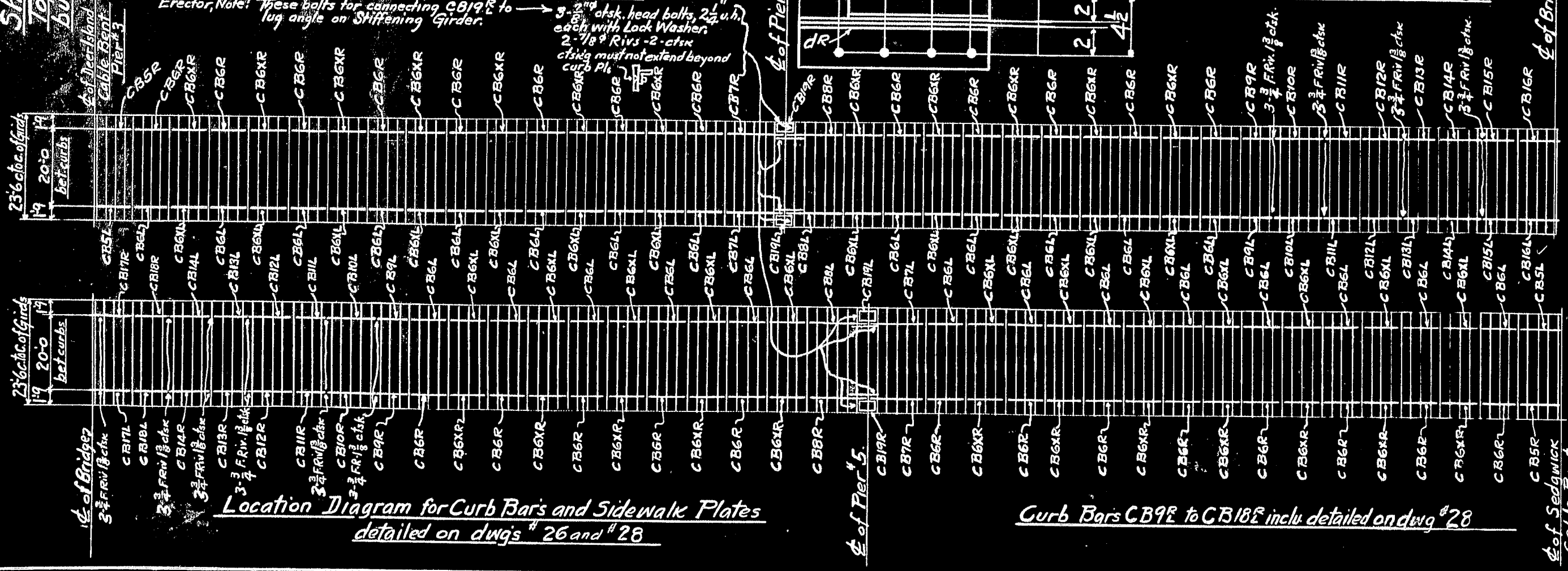


Notes to Erector: Webside of Beams marked X must be placed towards center of Bridge

Floor Beams F60 as shown and noted
4 - F61
23 - F62
2 - F63
5 - F64
5 - F65
4 - F66
2 - F67
2 - F68
2 - F69
4 - F70
2 - F71
1 - F72



L₃R

ord 6-Pls. 96 each, pl feet 22 Pls.
" " 44 " " " 10 Pls.

994 - 3/4" F.R.V. 2 1/2"
1136 - do 2 1/2"

For Location of Floor Beams, Floor Beam Brkts & Footwalk Brkts.

See Dwg 25

Summary of 7/8" F.R. Rivets & Bolts:

14 - 7/8" csk head (bladed)	1 1/2	Each with 1 1/2 third, box
2 - 7/8" bolts	2 1/2	1 1/2 nut & Lock Washer
A - 7/8" F. Rivets	3 1/2	(Full head)
B - do	2	(Ctsk head)
2232 - do	23 1/2	Full head
320 - do	2 1/2	"
4296 - do	2 1/2	"
1564 - do	2 1/2	"
64 - do	2 1/2	"
1062 - do	2 1/4	"

Shop Note
Tops of Floor Beams
not painted See Note

A - do	3 1/2	"
B - do	3 1/4	"

— 1000



APPROVED

P. W. A. PROJECT NO. ME 1010 D.

DEER ISLE SEDGWICK BRIDGE DISTRICT

BRIDGE OVER EGGEMOQUIN REACH

FROM LITTLE DEER ISLE TO SEDGWICK

HANCOCK COUNTY, MAINE

ROBINSON & STEINMAN ENGINEERS, NEW YORK CITY

Floor Beams, Floor Brkts, Footwalk Brkts, Curb Bars, Sidewalk Pls, Suspension Spans

THE PHOENIX BRIDGE CO.

CONTRACT 457

C.O. 457-D

ENGINEER: J. P. Wanner

DRAWN: J. P. Wanner

CHECKED BY: P. D. J. Wanner

SCALE: 3/4", 1" and 1 1/2"

DATE: 3-3-30

